

WEF 2025

WORLD
ECONOMIC
FORUM



- **General Pilot Briefing «WEF 2025» for IFR leaving
and joining flights (Y/Z flightplans)**

- **For detailed information check NOTAMs**

Airspace Restrictions

(AIRAC AIP SUP: 006/2024)

- Airspace restrictions related to World Economic Forum 2025 lasts on Friday 17th January and from Monday 20th until 25th January 2025
- PPR mandatory for flights with Y/Z flight plan to/from LSZS
- PPR managed by Engadin Airport.

→ Refer to www.engadin-airport.ch

- The PPR-number that you will get with our confirmation, has to be inserted in field 18 of your flightplan.

Airspace Restrictions

General Rules for joining/leaving operations:

(AIRAC AIP SUP: 006/2024)

- Flights within the restricted area operating under instrument flight rules (IFR) are only permitted for air traffic with DEP / DEST Samedan (LSZS) using Z- or Y- flight plans.

Special procedures apply for those flights as described on page 8 and page 9 of this briefing.

Airspace Restrictions

General Rules for joining/leaving operations: (AIRAC AIP SUP: 006/2024)

- **Radio Failure:**

In the event of a radio failure, the transponder shall be set to code **7600** and the following procedures apply.

Departure LSZS:

- under IFR continue according to FPL.
- under VFR return to LSZS.

Arrival LSZS:

- under IFR remain outside LSR and divert to alternate.
- under VFR, continue according approach chart to LSZS.

(In such cases a visual identification by the Swiss Air Force may be expected.)

Airspace Restrictions

General Rules for joining/leaving operations:

(AIRAC AIP SUP: 006/2024)

- Additional restrictions may be imposed by the Swiss Air Force at all times (also at short notice).
- Extensive MIL air traffic may exist also outside the restricted area.
- The lower limit of Airspace C over the Alps during the activation period of LS-R90 is FL130.
- All publications, particularly additional NOTAMs, shall be checked and adhered to.
- ATC instructions shall be strictly complied with.
- Any flight departing from Switzerland seeking approval to insert STS/ATFMX in flightplan item 18 shall strictly adhere to the rules and procedures described in AIP Switzerland ENR 1.9.2.2/3.

Activation of LS-R90

Restriction of the airspace within CH and FL

(AIRAC AIP SUP: 006/2024)

- **Activation:**

Friday 2025/01/17 from 0900 – 1600 UTC

and

Monday 2025/01/20 from 0700 UTC

until

Saturday 2024/01/25 1600 UTC (H24)

Note: Changes to activation times may be announced via NOTAM, which may result in LS-R 90 and CTR Davos having different activation periods.

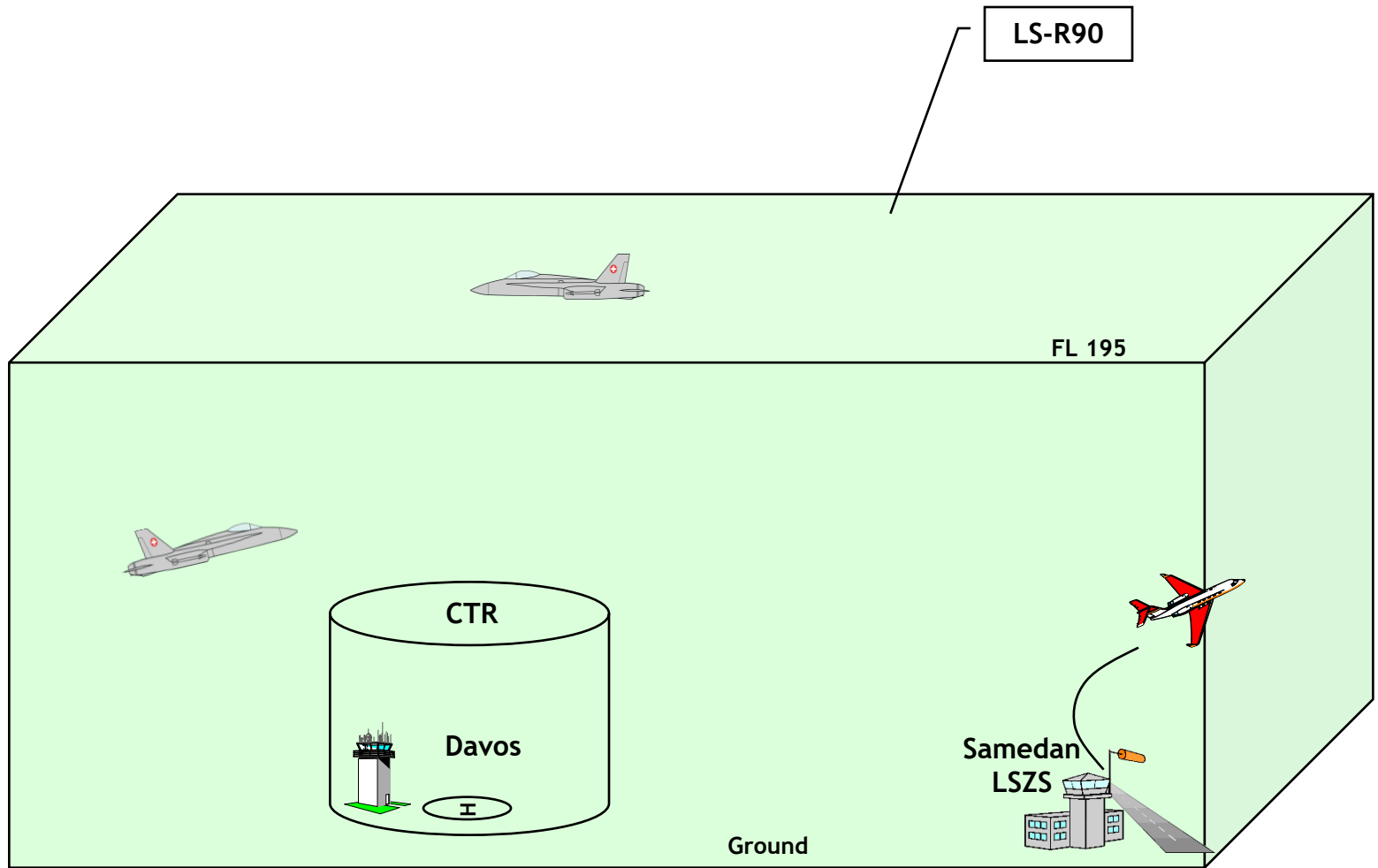
LS-R90 TEMPO Restricted Area

(AIRAC AIP SUP: 006/2024)

Dimension basically identical to WEF 2024

- Centre: Davos $46^{\circ}48'53''\text{N}/009^{\circ}50'58''\text{E}$, Radius **2.7NM**
GND to FL075
- Dimensions:
 - Lateral: **25 NM** radius around Davos above Swiss territory only (including the Principality of Liechtenstein).
 - Vertical extent:
Tempo **LS-R90**: **GND to FL 195**

Pattern R-Area



Procedures for IFR flights to / from Samedan Airport (LSZS)

(AIRAC AIP SUP: 006/2024)

The following IFR procedures are temporarily suspended:

- SID PELAD 1W
- SID PELAD 1V
- VISUAL APCH WIRH RNP GUIDANCE RWY 03
- RNAV APP RNP APCH RWY 21
- Aerodrome VFR Area Chart for Y and Z ATC FPL

Procedures for joining/leaving flights to / from Samedan Airport (LSZS)

(AIRAC AIP SUP: 006/2024)

The following IFR procedures are available without using the dedicated holding at RONAG and after ATC instruction only (not available for flight planning):

- SID RONAG 1E
- SID RONAG 1V
- PPR mandatory for flights with Y/Z flight plan to/from LSZS.
- PPR managed by Engadin Airport. (see: www.engadin-airport.ch).

Routing for arrivals LSZS with Y-FPL

(AIRAC AIP SUP: 006/2024)

- **ATS Route Z83 segment DETRI-GUGSA (and vice versa) only available and compulsory for ADEP/ADES LSZS except ADEP LSZS via ATS Route L613 segment RONAG-SUXAN.**
- All flights arriving from the **south** shall file their FPL via *Z651 DETRI Z83 GUGSA (then VFR)*;
- All flights arriving from the **north** shall file their FPL via *N850 SOSON Z119 DETRI Z83 GUGSA (then VFR)*.
- **The reporting point GUGSA and the associated holding pattern are the IFR clearance limit.**
- **All flights with destination LSZS that are unable to cancel their IFR flight plan latest at GUGSA shall divert to their alternate aerodrome.**
- **Holding over GUGSA is limited to 1 holding pattern per flight.**

Arrivals LSZS RWY 03

Procedure for approach after IFR cancellation:

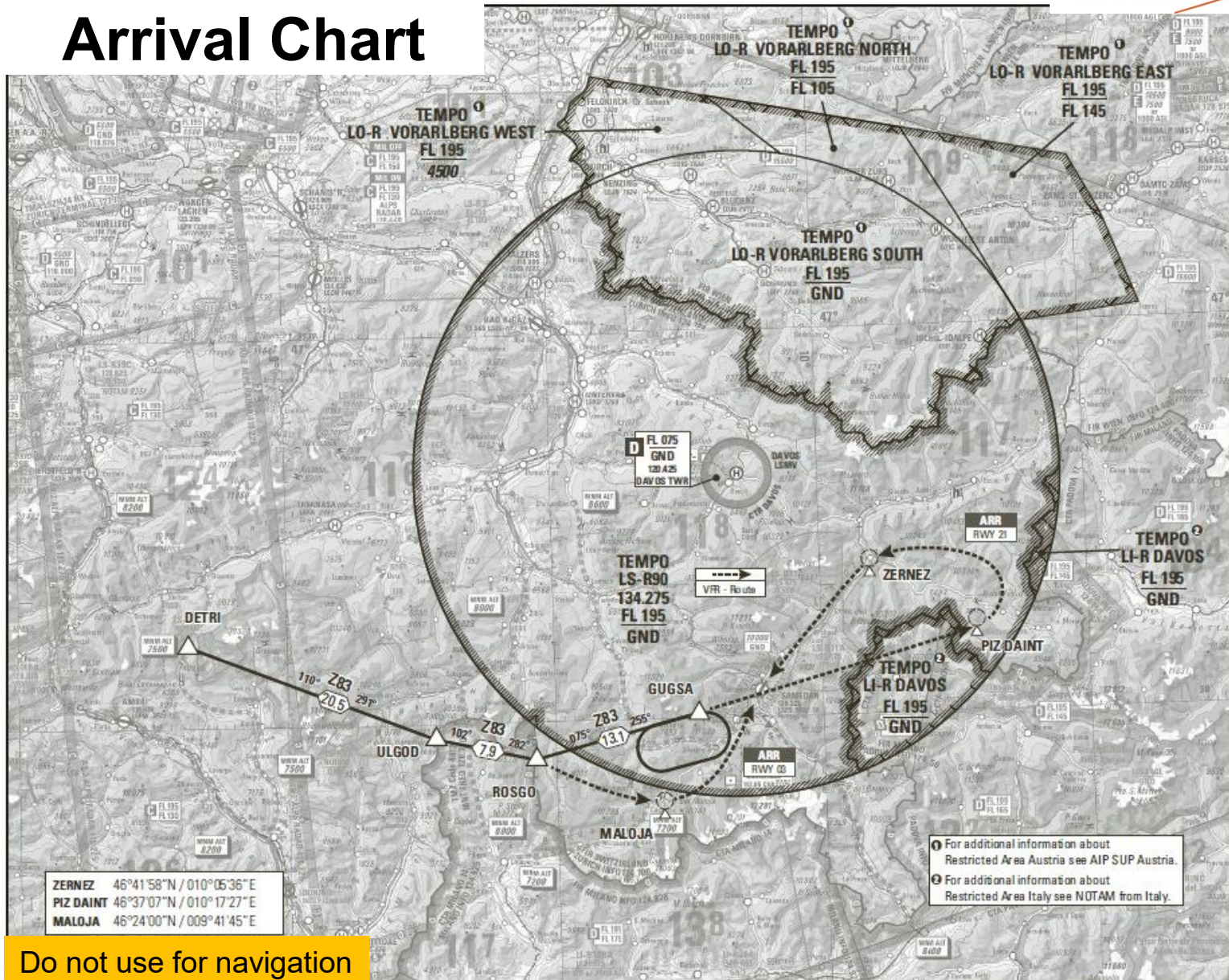
- Arrivals to RWY 03 shall prepare to cancel IFR at ROSGO.
- After ROSGO, such flights shall proceed VFR via MALOJA to LSZS.
- If unable to cancel IFR latest at ROSGO, flights shall continue on Z83 into the GUGSA holding pattern and cancel IFR within the holding pattern.
- If unable to proceed VFR to LSZS after GUGSA, flights shall leave the LSR via right turn ROSGO Z83 DETRI.
- After IFR cancellation, proceed VFR south of Z83 via Maloja to LSZS.
- Maintain radio contact with ZURICH DELTA (119.225) until passing FL 130, thereafter contact SAMEDAN INFO (135.325);

Arrivals LSZS RWY 21

Procedure for approach after IFR cancellation:

- Arrivals to RWY 21 shall prepare for IFR cancellation latest at GUGSA.
- After GUGSA, flights shall proceed VFR direct to PIZ DAINT, then turn left via ZERNEZ to LSZS.
- Refer to VFR SUP 004/2024 for further details regarding LSZS VFR procedures.
- Maintain radio contact with ZURICH DELTA (119.225) until passing FL 130, thereafter contact SAMEDAN INFO (135.325);

Arrival Chart



Do not use for navigation

Procedure for departure before changing to IFR:

(AIRAC AIP SUP: 006/2024)

- **All departures being planned via ROSGO Z83 DETRI shall expect to change from VFR to IFR at ROSGO FL 160:**
- The following procedure shall be applied:
- After departure from **RWY 03**, flights shall initially climb straight ahead.
- Then - when clear of terrain, considering wind and turn radius for the applicable IAS, flights shall turn right and proceed via MALOJA to ROSGO.
- After departure from **RWY 21**, flights shall proceed direct to MALOJA.
- After MALOJA - and when clear of terrain - flights shall proceed direct to ROSGO.

Departures being planned via RONAG L613 SUXAN may expect SID RONAG 1E / 1V only by ATC. Otherwise expect to change from VFR to IFR at RONAG 16000ft AMSL

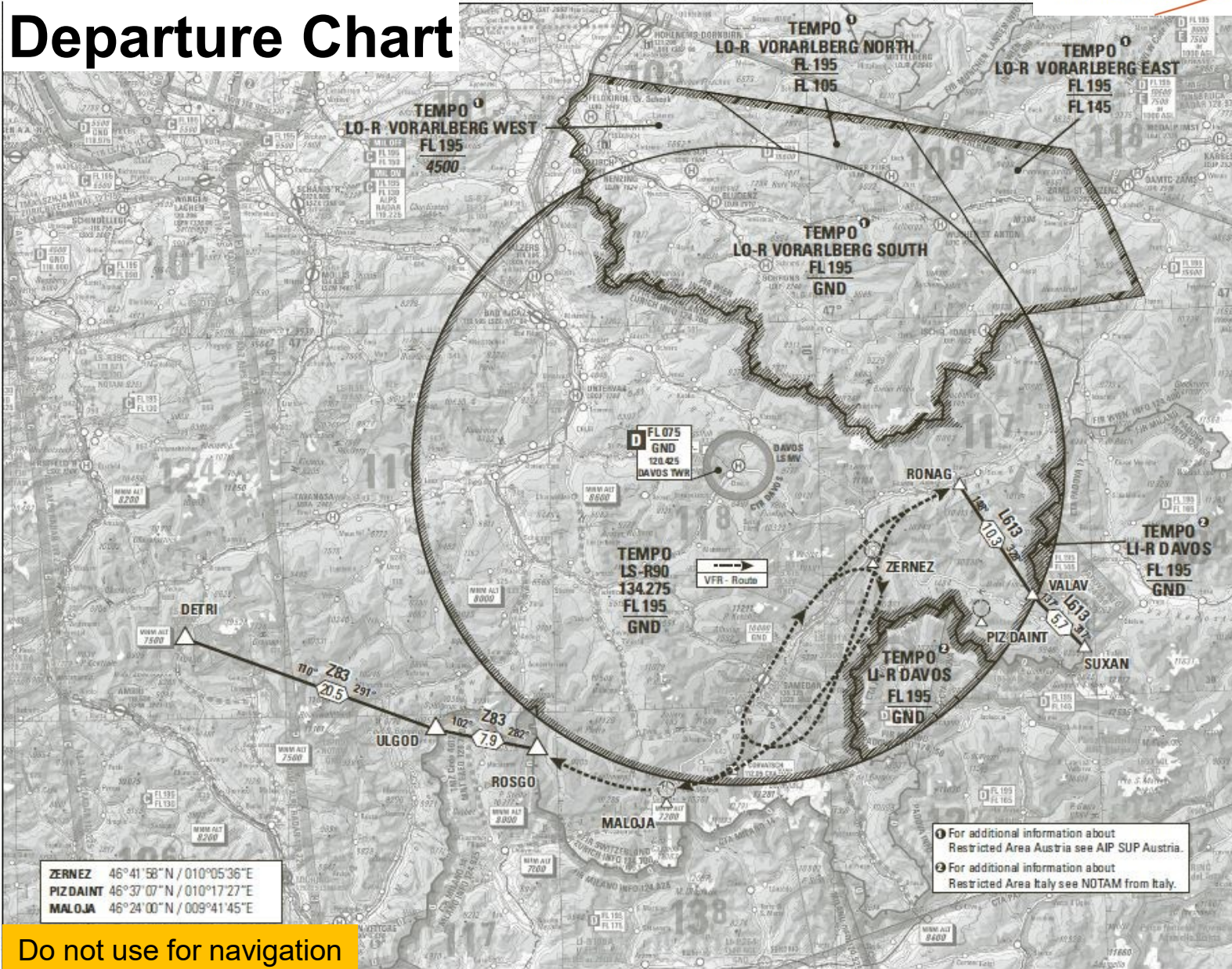
Departures LSZS RWY 03

- After departure from RWY 03, climb straight ahead, then - when clear of terrain, proceed via ARDED to RONAG;
- Clearance from ZURICH ATC to enter LS-R90 will be relayed by SAMEDAN AFIS.

Departures LSZS RWY 21

- After departure from RWY 21 climb straight ahead, when clear of terrain, turn left (remain within Swiss airspace) and proceed via ARDED to RONAG
- Clearance from ZURICH ATC to enter LS-R90 will be relayed by SAMEDAN AFIS.

Departure Chart



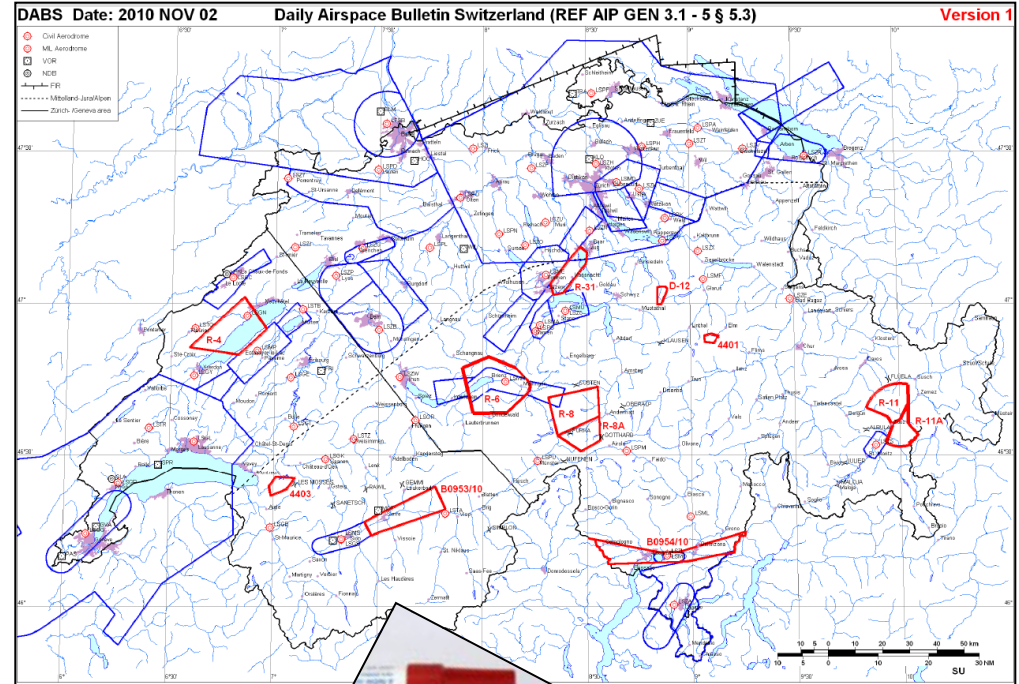
ZERNEZ 46°41'58"N / 010°05'36"E
 PIZ DAINI 46°37'07"N / 010°17'27"E
 MALOJA 46°24'00"N / 009°41'45"E

① For additional information about Restricted Area Austria see AIP SUP Austria.
 ② For additional information about Restricted Area Italy see NOTAM from Italy.

Do not use for navigation

Publications

- AIP SUP
(CH + AUT)
- NOTAM
- DABS
- Info websites



PPR Request / Confirmation



Request PPR for C/S: _____ REG: _____ Type of A/C: _____

Date of flight: ____ / ____ /2025

With my signature I do hereby declare that I have read and understood the General Pilots Briefing WEF 2025:

Pilots Name: _____

Pilots Function: _____

Date: _____

Signature: _____

Please send this PPR request/ confirmation together with your handling request to:
Handling@engadin-airport.ch